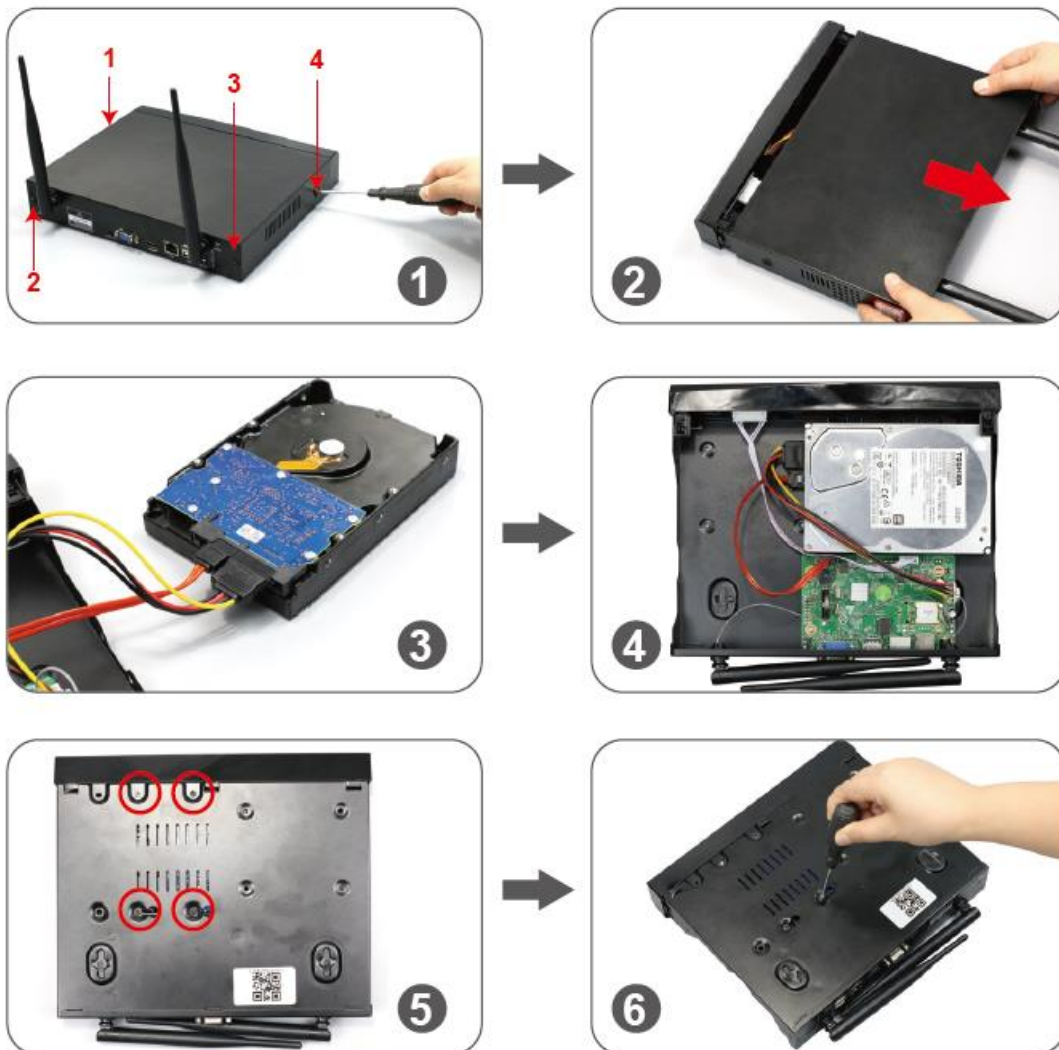


## How to install hard drive for NVR?

The NVR may include hard drive. If you bought a NVR without hard drive or you want to replace the pre-install hard drive with bigger size. Please install hard drive by yourself.

Before you install the hard drive, please unplug the NVR recorder from power source.

- 1 Remove the four screws on the NVR recorder.
- 2 Slide the top panel off from NVR recorder.
- 3 Connect the SATA power and data cables from the NVR recorder to the corresponding ports on your HDD.
- 4 Once connected, place the HDD into the NVR with the cables placed as shown.
- 5 Holding the hard drive and the NVR panel gently turn it over and line up the holes on the hard drive with the holes on the NVR panel.
- 6 Screw the provided screws into the holes by Philips screwdriver.
- 7 Slide the NVR panel back on and fix the panel with Phillips screws.



### Note:

- A NVR system can max support 6TB hard drive, and it only works with the internal 3.5" SATA hard drive (such as Seagate, WD, TOSHIBA...), it is recommended to use a surveillance hard drive.
- B After install the hard drive, please firstly format the hard drive disk before recording.

### How to format the hard drive:

Right click mouse to enter menu "System Setup"> General Setup> HDD Setup>select HDD> click "Format" button

