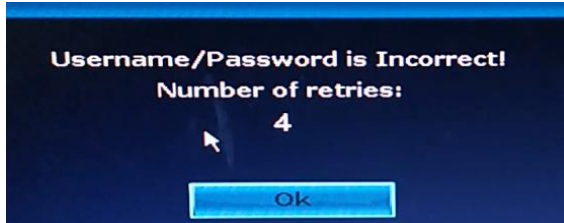


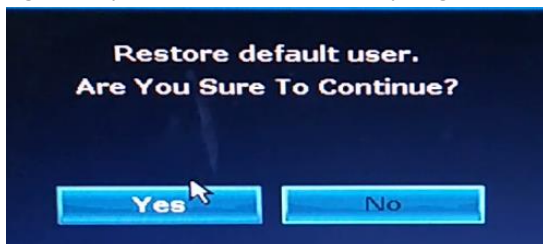
How to do if I forget new password?

Default user name is admin; Default password is no password, leave it blank. If you've changed password and forget it:

- 1 Click "OK" and it will show "User Name/Password is incorrect";



- 2 Move mouse arrow to anywhere of interface that pops up (don't click "OK" here)
- 3 Then click left mouse button and click right mouse button, click left and click right, left and right... repeat several times, until you get new interface "Restore default user...", Click "Yes".



- 4 At the last interface, you can reset new password or you can click "Ok" directly and the system password will be default password again (No password)

